

**BEAUTIFUL 2 BEDROOM APARTMENT
WITH PANORAMIC VIEWS CENTRALY
LOCATED AND 50M FROM THE SEA**

1 900 €/month

Property Code:	2848	Type:	Long-term rent - Apartment
Location:	Limassol - NEAPOLIS	Internal Area:	100 m ²
Bedrooms:	2	Bathrooms:	2
Renovation:	Renovated	Floor:	4
Number of floors:	7	Distance to the sea:	50 m
Distance to airport:	65 km	Covered verandas, m²:	6

Property features:

Air Condition	Parking - Uncovered	Telephone Line	Furnished
Oven	Washing machine	Microwave	Cooker
Parking	Refrigerator	Balcony	Furniture

Description:

- Completely unobstructed sea view from the master bedroom and living room
- 100 sq. meters of covered areas
- Recently completely renovated (electricity installation, plumbing, baths, walls, tiles, kitchen etc.)
- New immersion heater installed (2020)
- 2 bathrooms - master bedroom en suite
- Large second bedroom - space for 3rd bed or small office
- New furniture (including 3 sofa beds)
- Current bedding can accommodate 2 in the master bedroom, and 2 in 2nd bedroom.
- Central location - next to all amenities (banks, supermarkets, shops, cafes, restaurants etc)
- Next to Pafilia ONE, Oval business centre and many places of work within walking distance
- Private parking, gated entrance to the building
- Recently renovated building
- Lift access

Rent 1900 eur/month, 2 months pre-payment + 1 deposit

Available from 01.02.2023

**BEAUTIFUL 2 BEDROOM APARTMENT
WITH PANORAMIC VIEWS CENTRALY
LOCATED AND 50M FROM THE SEA**

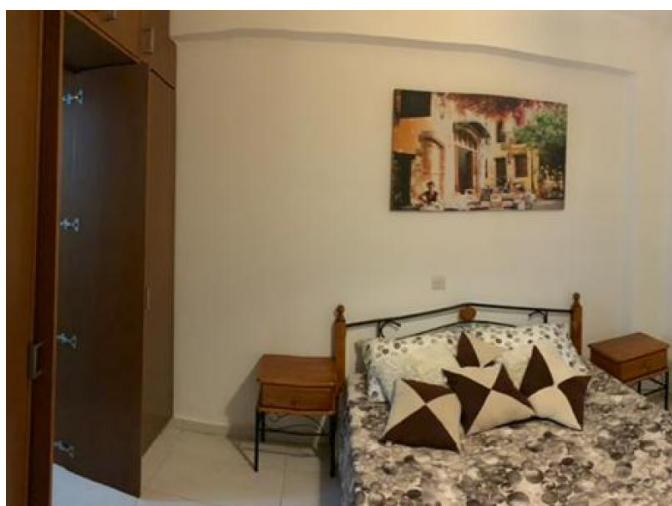
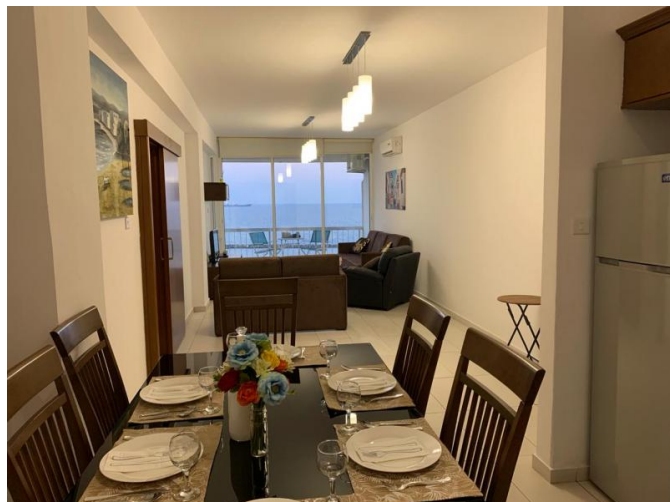
1 900 €/month



10.04.2026

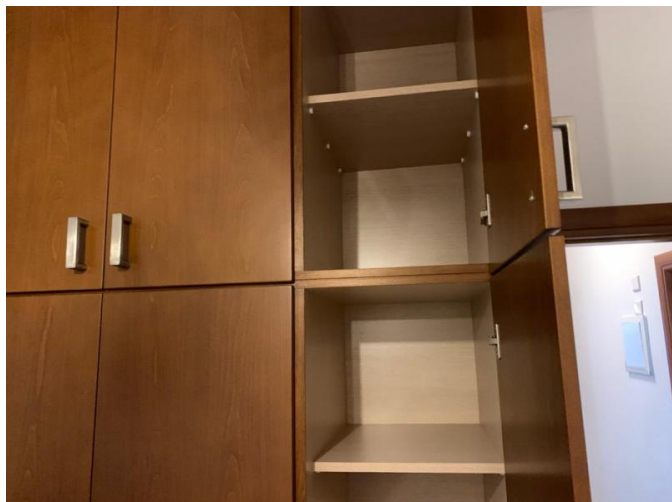
**BEAUTIFUL 2 BEDROOM APARTMENT
WITH PANORAMIC VIEWS CENTRALY
LOCATED AND 50M FROM THE SEA**

1 900 €/month



**BEAUTIFUL 2 BEDROOM APARTMENT
WITH PANORAMIC VIEWS CENTRALY
LOCATED AND 50M FROM THE SEA**

1 900 €/month



**BEAUTIFUL 2 BEDROOM APARTMENT
WITH PANORAMIC VIEWS CENTRALY
LOCATED AND 50M FROM THE SEA**

1 900 €/month

