

4 BEDROOM UPPER FLOOR DOUPLEX HOUSE WITH BEAUTIFUL PANORAMIC VIEWS

1 300 €/month

Property Code:	2979	Type:	Long-term rent - House/Villa
Location:	Limassol - PALODEIA	Internal Area:	180 m ²
Bedrooms:	4	Bathrooms:	4+
Distance to airport:	70 km	Covered verandas, m²:	50

Property features:

Unfurnished	Air Condition	Parking - Covered	Parking - Uncovered
Telephone Line	Solar panels for hot water	Double Glazing	Garage
Oven	Washing machine	Dish washer	Cooker
Parking	Refrigerator	Balcony	

Description:

4 bedroom upper floor house for RENT situated in Polodia area Limassol, close to all local amenities and Heritage school. The neighbourhood is very quiet and just 5 minutes away from the roundabout of Aya Fyla.

The property is built on 3 levels. Two upper floors with independent entrances have a 180sqm in total. There's a living, dining, kitchen, 2 large verandas with breathtaking panoramic views on the main entrance floor from the top of the building; and 4 double bedrooms, one of them with a private en-suite, and 2 more bathrooms on the other level of the house. There're 2 more spacious verandas on the same level of the building.

There are heating/cooling air-conditioning units in all areas, solar panels and a pressurized water system, double-glazed thermal isolated windows with mosquito nets and electric shutters.

The property is built using top-quality fine materials and finishes. There're 2 covered parking spaces.

Viewings are highly recommended prior notifications.

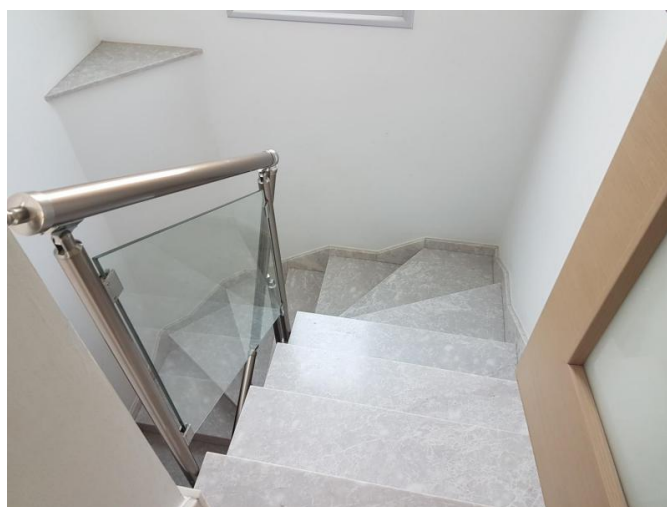
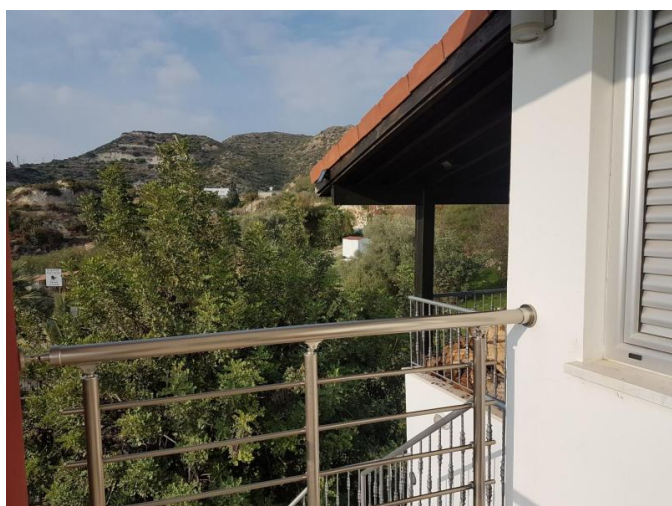
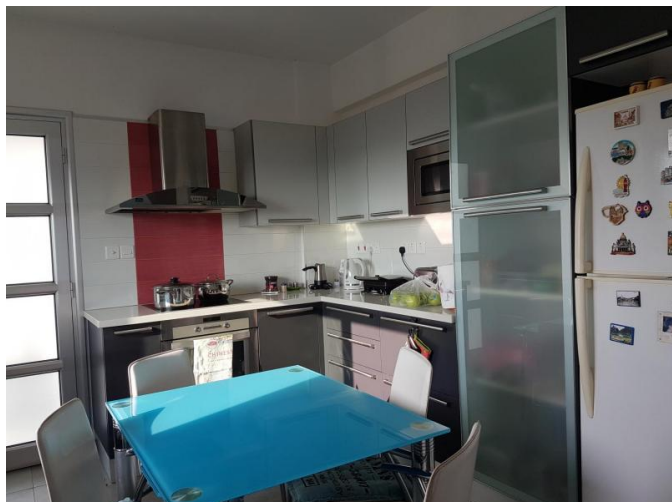
**4 BEDROOM UPPER FLOOR DOUPLEX
HOUSE WITH BEAUTIFUL PANORAMIC
VIEWS**

1 300 €/month



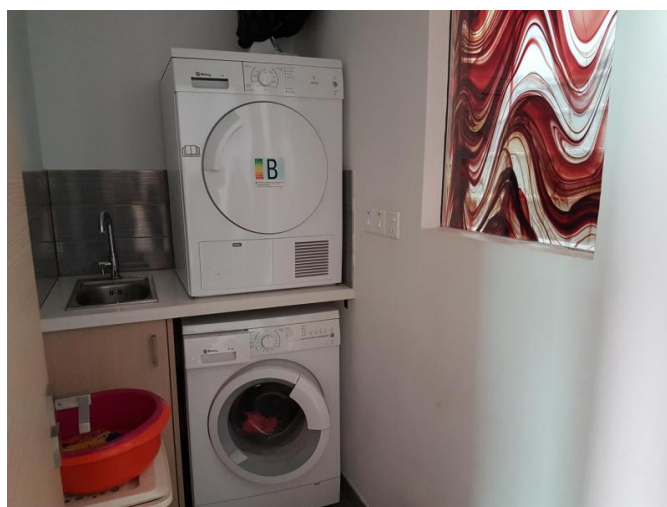
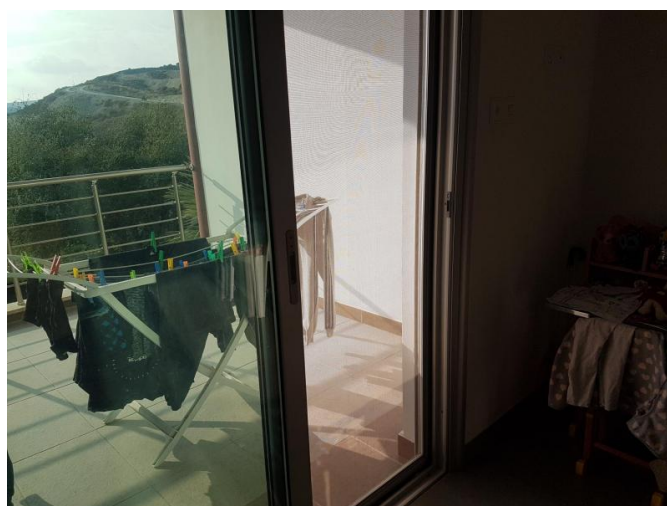
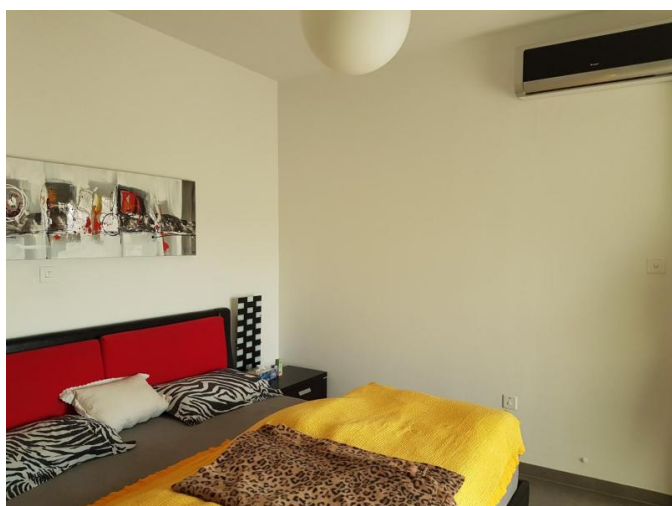
4 BEDROOM UPPER FLOOR DOUPLEX HOUSE WITH BEAUTIFUL PANORAMIC VIEWS

1 300 €/month



4 BEDROOM UPPER FLOOR DOUPLEX HOUSE WITH BEAUTIFUL PANORAMIC VIEWS

1 300 €/month



4 BEDROOM UPPER FLOOR DOUPLEX HOUSE WITH BEAUTIFUL PANORAMIC VIEWS

1 300 €/month

