

Property Code:	3032	Type:	Long-term rent - Office
Location:	Limassol - OLD PORT	Internal Area:	220 m ²
Renovation:	Modern	Floor:	7

Property features:

Air Condition	Parking - Uncovered	Telephone Line	Parking
Refrigerator			

Description:

Located at the business heart of Limassol next to the Molos park, close to the local amenities, hotels, cafes and restaurants, this office is an ideal place to call home for your business.

The office is available for long-term rent. It is set on the 7th & 8th floor and comes with hardwood floors, open concept lounge, staffed reception, private offices seating from 3 to 10 people, fully equipped kitchen and views of the Mediterranean Sea, Molos park and Spyrou Araouzou Street.

Molos area is a unique recently developed area filled with different types of companies, amazing restaurants, hotels, cafes, and many more. It's an ideal area for any company to call home not only for business reasons, but also to get the perfect balance of work and enjoyment.

Price 4500/month

Floor 7th & 8th

Building age 20

Total area 220 sqm +

Bathrooms 2

Air conditioning In all rooms

White goods included

Furnished/unfurnished

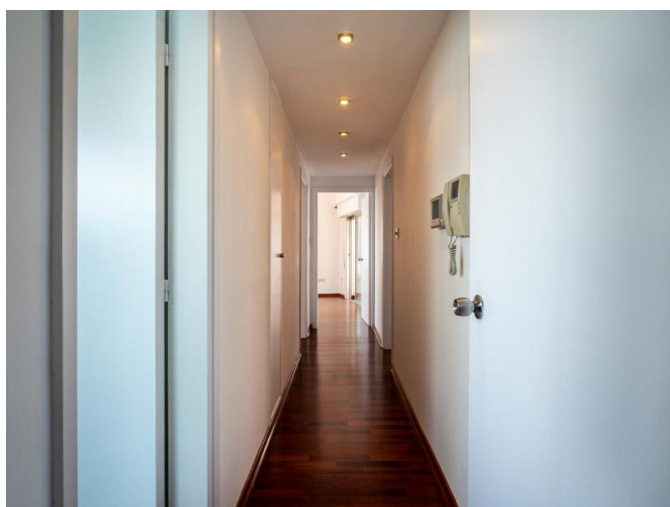
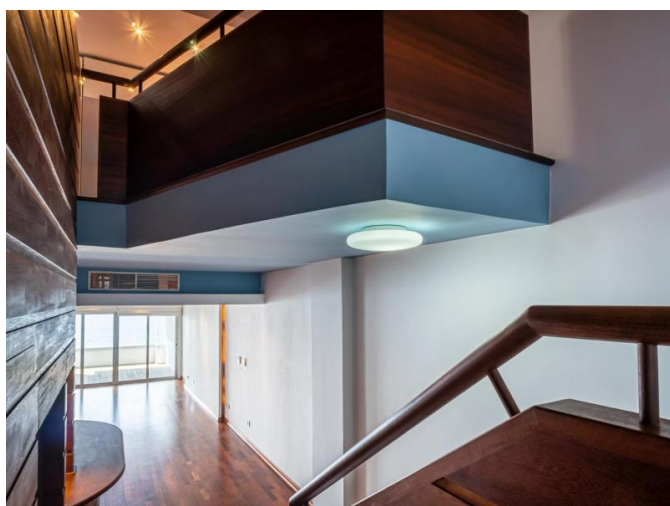
View Sea & city views

Car parking (covered, uncovered) 2 + public parking available



OFFICE OF 220 SQ.M NEXT TO MOLOS PARK

4 500 €/month



**OFFICE OF 220 SQ.M NEXT TO MOLOS
PARK**

4 500 €/month

