

**LUXURY MODERN 3 BEDROOM
APARTMENTS IN PAPAS AREA POTAMOS
GERMASOGIA LIMASSOL**

€ 719 950 — € 811 580

Property Code: 3285	Type: Sale - Apartment
Location:	Internal Area: 148 m ²
Bedrooms: 3	Bathrooms: 3
Renovation: Modern	Floor: 3
Number of floors: 4	Heating: Underfloor heating
Year of construction: 2021	Distance to the sea: 500 m
Distance to airport: 60 km	Status: New
VAT: PLUS VAT	Uncovered verandas, m²: 100
Covered verandas, m²: 25	

Property features:

Common Pool	Heating	Air Condition	Telephone Line
VRV central ceiling system	Store Room	Solar panels for hot water	Double Glazing
Garden	Parking	Balcony	

Description:

These captivating apartments are located within an impressive recently completed building that encloses a beautifully landscaped courtyard garden, swimming pool, and private covered parking.

The apartments are spacious two- and three-bedroom first-second-third floor apartments offering stunning views from the private balcony accessed from the main living area. Open-plan living spaces with full-height windows fill the apartment with light. The modern kitchen comes with high-standard kitchen cabinets, whilst the bathroom and en-suite offer high-standard elegant sanitary ware from European brands and marble floors and walls. All rooms come with build-in wardrobes from European brands and semi-solid parquet floors.

The penthouse comes with a private roof terrace and swimming pool.

All city amenities are located just a few minutes away.

These apartments are perfect for contemporary and chic living combined with fantastic connectivity to the city and beyond.

AVAILABLE TREE APARTMENTS

2-bedroom apartment on the first floor

3-bedroom apartment on the second floor

3-bedroom penthouse on the third floor

**LUXURY MODERN 3 BEDROOM
APARTMENTS IN PAPAS AREA POTAMOS
GERMASOGIA LIMASSOL**

€ 719 950 — € 811 580

Bedrooms	2 bedrooms	3 bedrooms	3
BEDROOM PENTHOUSE WITH PRIVATE SWIMMING POOL			
Indoor area	88 sq.m.	112 sq.m.;	122
sq.m.			
Covered veranda	21 sq.m.	31.9 sq.m.;	25.75
sq.m.			
Uncovered veranda	-	5 sq.m.;	3.2
sq.m.			
Bathrooms	2 bathrooms	1 bathroom and 1 guest toilet	2
bathrooms and 1 guest toilet			
Total area	109 sq.m.	148.9 sq.m.	
259.5			
Location	Papass area, Limassol		
Distance to the sea	500 m.		
High ceilings	3.15 m	3.15 m	
3.15 m			
Price	EUR 503 965	plus VAT	EUR 719 950
VAT			PLUS VAT
			EUR 811 580 PLUS
Security entrance doors	<input type="checkbox"/>	<input type="checkbox"/>	<input type="checkbox"/>
Intercom system	<input type="checkbox"/>	<input type="checkbox"/>	<input type="checkbox"/>
High standard finishes	<input type="checkbox"/>	<input type="checkbox"/>	<input type="checkbox"/>
Quiet area; city amenities within a few minutes away	<input type="checkbox"/>	<input type="checkbox"/>	<input type="checkbox"/>
Private pool on roof terrace	-	-	<input type="checkbox"/>

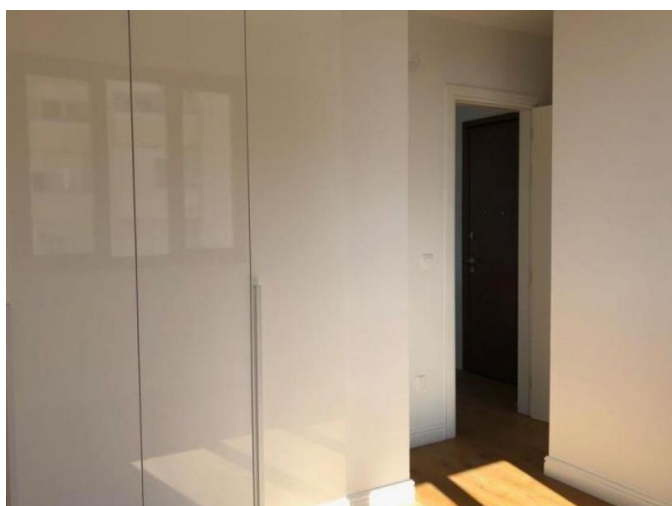
**LUXURY MODERN 3 BEDROOM
APARTMENTS IN PAPAS AREA POTAMOS
GERMASOGIA LIMASSOL**

€ 719 950 — € 811 580



**LUXURY MODERN 3 BEDROOM
APARTMENTS IN PAPAS AREA POTAMOS
GERMASOGIA LIMASSOL**

€ 719 950 — € 811 580



**LUXURY MODERN 3 BEDROOM
APARTMENTS IN PAPAS AREA POTAMOS
GERMASOGIA LIMASSOL**

€ 719 950 — € 811 580

