

MODERN ONE BEDROOM FLAT IN 250M
FROM DASOUDI

1 200 €/month

Property Code:	3315	Type:	Long-term rent - Apartment
Location:	Limassol - POTAMOS GERMASOGIA	Internal Area:	87 m²
Bedrooms:	1	Bathrooms:	1
Renovation:	Modern	Year of construction:	2019
Distance to the sea:	250 m	Distance to airport:	60 km

Property features:

Air Condition	Parking - Covered	Telephone Line	Furnished
Solar panels for hot water	Double Glazing	Garden	Oven
Washing machine	Dish washer	Cooker	Extractor Fan
Parking	Refrigerator	Balcony	

Description:

MODERN ONE-BEDROOM FLAT IN 250M FROM DASOUDI

For rent a one-bedroom apartment in a modern complex with amenities just 250 meters from Dasoudi beach and park.

The layout includes the living room with an open kitchen, 1 bedroom with wardrobes, a bathroom, and a covered veranda. All high specs a/c, double windows, security.

The building is placed in a very quiet area of Papas supermarket and has all access to the main road or highway.

MODERN ONE BEDROOM FLAT IN 250M FROM DASOUDI

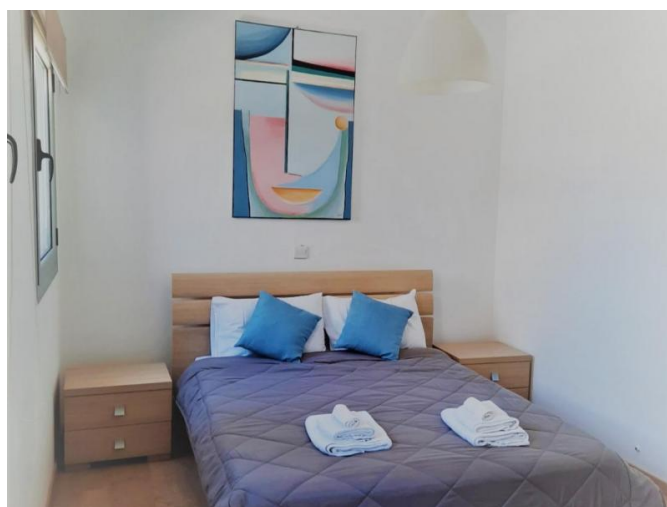
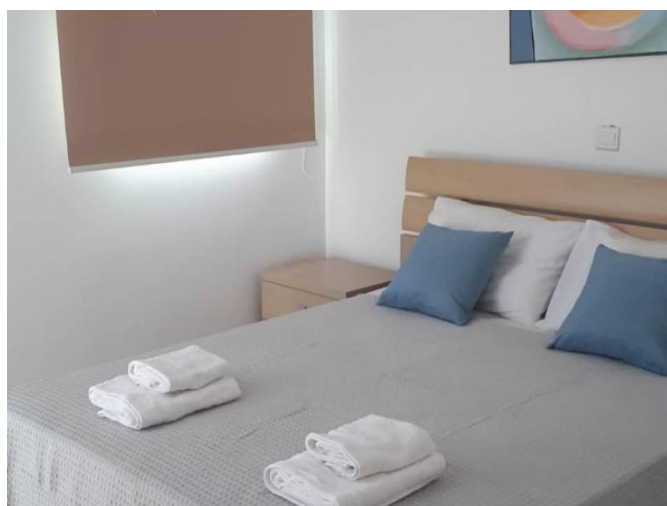
1 200 €/month



29.04.2024

MODERN ONE BEDROOM FLAT IN 250M FROM DASOUDI

1 200 €/month



29.04.2024

MODERN ONE BEDROOM FLAT IN 250M FROM DASOUDI

1 200 €/month



29.04.2024