

LUXURY VILLA IN A COMPLEX NEAR THE SEA IN THE MOST PRIVILEGED AREA IN LIMASSOL

2 700 €/month

Property Code:	441	Type:	Long-term rent - House/Villa
Location:	Limassol - AMATHOUNTA	Internal Area:	225 m ²
Plot Area:	400 m ²	Bedrooms:	3
Bathrooms:	4+	Renovation:	Design
Number of floors:	2	Heating:	Underfloor heating
Distance to the sea:	150 m	Distance to airport:	65 km

Property features:

Common Pool	Heating	Air Condition	Parking - Covered
Telephone Line	Alarm	Furnished	Private Pool
Store Room	Fireplace	Laundry room	Solar panels for hot water
Double Glazing	Garden	Maids Room	Oven
Washing machine	Dish washer	Microwave	Cooker
Extractor Fan	Parking	Refrigerator	Balcony
Furniture			

Description:

Looking for a luxury property? A seafront villa in the most privileged area in Limassol? The answer is here. Located just 100 meters from one of the best blue-flagged beaches in Limassol, being a part of a prestigious complex, this villa gains distinctive appeal from its superb seafront location and the application of stylish contemporary design. This property consists of three levels. There is a spacious sitting/dining area and semi-open plan kitchen on the first level. 3 bedrooms, one of which is en-suite with lovely sea views. There is an extra level in the basement which may be used as an entertainment area or a maid's level. The total covered area is 225 m². Villa comes fully furnished with quality furniture. Some features of the property: a private swimming pool, alarm system, landscaped garden, and cosy fireplace for winter evenings. Some additional features: a private neighbourhood with walkways and squares. Children's play areas. Fitness centre. Guard house at the entrance of the project, with controlled access. Communal swimming pools. Prime, up-market location - With many of Limassol's five-star hotels and resorts nearby. Close to an international school.

**LUXURY VILLA IN A COMPLEX NEAR THE
SEA IN THE MOST PRIVILEGED AREA IN
LIMASSOL**

2 700 €/month



06.02.2026

**LUXURY VILLA IN A COMPLEX NEAR THE
SEA IN THE MOST PRIVILEGED AREA IN
LIMASSOL**

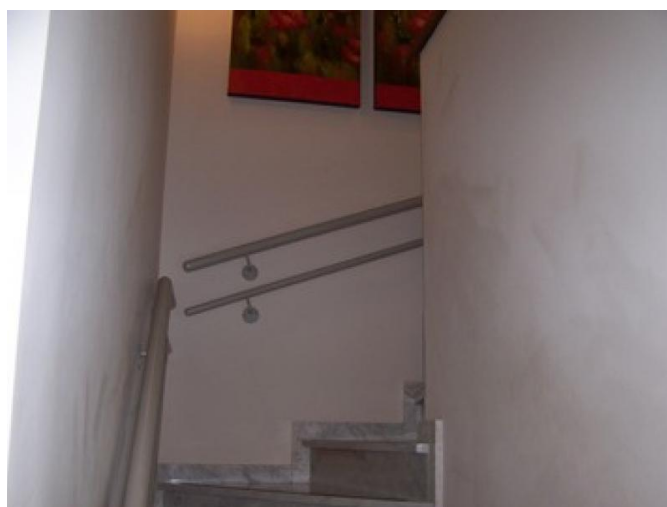
2 700 €/month



06.02.2026

**LUXURY VILLA IN A COMPLEX NEAR THE
SEA IN THE MOST PRIVILEGED AREA IN
LIMASSOL**

2 700 €/month



06.02.2026

**LUXURY VILLA IN A COMPLEX NEAR THE
SEA IN THE MOST PRIVILEGED AREA IN
LIMASSOL**

2 700 €/month



06.02.2026

**LUXURY VILLA IN A COMPLEX NEAR THE
SEA IN THE MOST PRIVILEGED AREA IN
LIMASSOL**

2 700 €/month



06.02.2026