

COMMERCIAL BUILDING IN THE AREA OF POLEMIDIA4 500 000 €

Property Code:	5671	Type:	Sale - Commercial
Location:	Limassol - POLEMIDIA	Internal Area:	1530 m²
Renovation:	Modern	Status:	New

Property features:

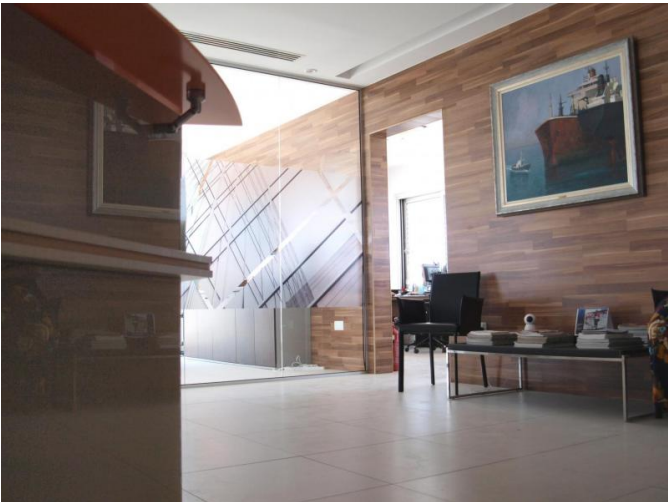
Elevator	Telephone Line	Solar panels for hot water	Double Glazing
Extractor Fan	Parking	Balcony	

Description:

These building is located on Spyrou Kyrianou Avenue in the area of Polemidia, one of the main commercial roads in Limassol,offering high visibility from all sides.Furthermore this modern commercial building is located close to Limassol's centralbusiness district, surrounded by an array of commercial oces, nancial institutions and a large selection of showrooms.Offering a stylish and comfortable, yet functional working environment. The building is fully tenanted by reputable local and international companies, on long term rental contracts.The ground oor retail unit with mezza-nine is utilized as an oce area, with the above oors oering four corporate oces. The building oers ample visitor parking spaces on the ground oor, in addition to secured underground parking facilities sucient to accommodate the needs of the tenants.

Polemidia Area - Limassol

- Spyrou Kyprianou Avenue
- Retail & Office Space
- Plot Size: 525m2
- Total Build area: 1530m2
- **COMPLETED**
- **FULLY TENANTED**
- **FOR SALE - €4,500,000 (NO VAT)**



COMMERCIAL BUILDING IN THE AREA OF POLEMIDIA

4 500 000 €

