

## TWO BEDROOM APARTMENT IN THE NEW RESIDENTIAL COMPLEX

2 100 €/month

<b>Property Code:</b>	5672	<b>Type:</b>	Long-term rent - Apartment
<b>Location:</b>	Limassol - POTAMOS GERMASOGIA	<b>Bedrooms:</b>	2
<b>Bathrooms:</b>	2	<b>Renovation:</b>	Modern
<b>Floor:</b>	1	<b>Energy class:</b>	B
<b>Distance to the sea:</b>	400 m	<b>Distance to airport:</b>	65 km
<b>Uncovered verandas, m²:</b>	10	<b>Covered verandas, m²:</b>	17

### Property features:

Common Pool	Communal Pool	Furnished	Storage
Air Condition	Telephone Line	Store Room	Solar panels for hot water
Double Glazing	Garden		

### Description:

This two-bedroom apartment is set in the quiet tourist area of Germasogeia in Limassol, within walking distance to Dassoudi beach, eucalyptus park, shops, restaurants, fitness centers, and beauty salons.

The apartment is situated on the first floor of a beautiful gated residential complex. The property offers an open-plan kitchen with a spacious lounge/dining area, two double bedrooms with fitted wardrobes, two bathrooms, and a spacious balcony.

The property is well-designed and offers laminated and ceramic tiled floor, air-condition split units, strong double-glazed windows with nets, a superb view over the garden and pool, allocated covered parking and storage.

Moreover, the residential complex offers to owners and guests a big swimming pool, playground, surrounded by a green area, covered/uncovered parking, and gate entry system.

The price is EUR 2,100 per month plus common expenses

## TWO BEDROOM APARTMENT IN THE NEW RESIDENTIAL COMPLEX

---

2 100 €/month



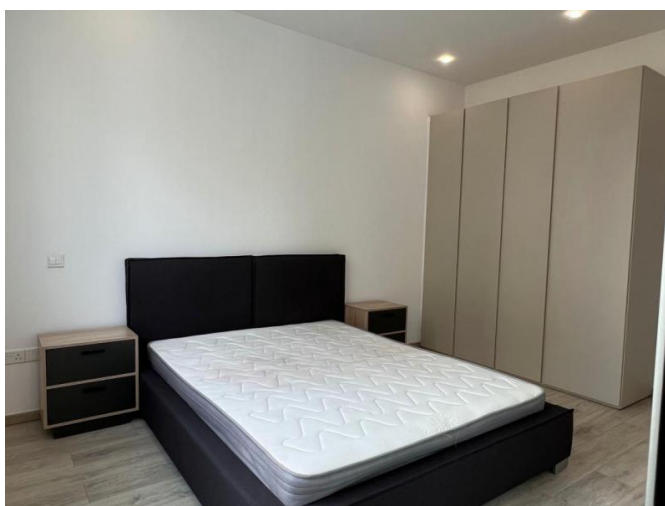
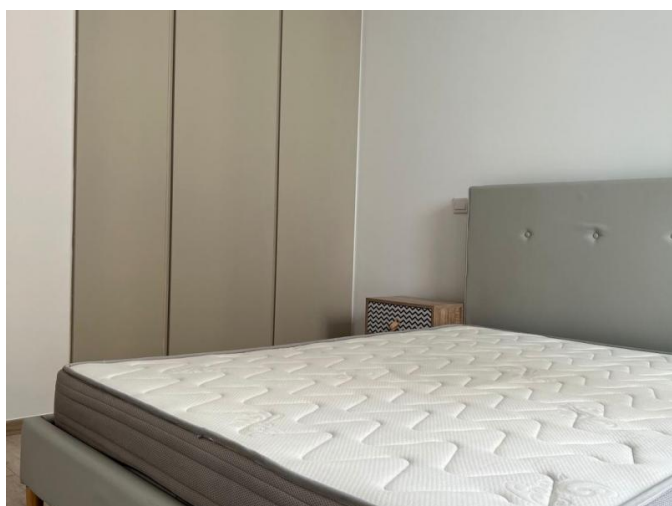
---

23.02.2026

## TWO BEDROOM APARTMENT IN THE NEW RESIDENTIAL COMPLEX

---

2 100 €/month



---

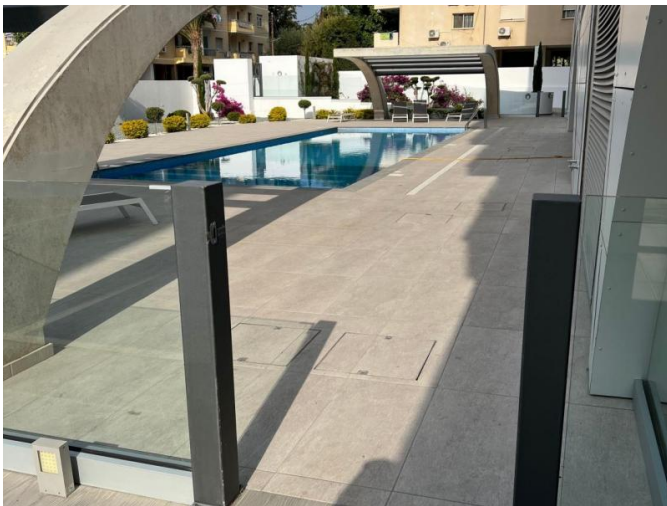
23.02.2026



## TWO BEDROOM APARTMENT IN THE NEW RESIDENTIAL COMPLEX

---

2 100 €/month



---

23.02.2026