

## 2 BEDROOM LUXURY AND SPACIOUS APARTMENT OF 175SQM IN MODERN BUILDING WITH SEA VIEW

3 350 €/month

<b>Property Code:</b>	5758	<b>Type:</b>	Long-term rent - Apartment
<b>Location:</b>	Limassol - MOUTAGIAKA	<b>Internal Area:</b>	175 m <sup>2</sup>
<b>Bedrooms:</b>	2	<b>Bathrooms:</b>	2
<b>Floor:</b>	2	<b>Number of floors:</b>	11
<b>Heating:</b>	Underfloor heating	<b>Year of construction:</b>	2021
<b>Distance to the sea:</b>	50 m	<b>Distance to airport:</b>	55 km

### Property features:

2nd Floor Apartment	Communal Pool	Covered Parking	Elevator
Furnished	Sea View	Under Floor Heating	Telephone Line
Alarm	Furnished	VRV central ceiling system	Solar panels for hot water
Double Glazing	Oven	Washing machine	Dish washer
Cooker	Extractor Fan	Parking	Refrigerator
Balcony	Furniture		

### Description:

2 bedroom luxury and spacious apartments of 175sqm in modern building with a refined luxury and marble touch emerge from the blue waters of the Limassol sea, offering breath-taking views. Building consists of eleven floors with twenty-eight modern apartments and two three-bedroom penthouses with private pool and roof garden. Each apartment promises uninterrupted views of the coastline, thanks to the deep balconies that provide ample space for residents to create their own beachside oasis. The two- and three-bedroom apartments feature en-suite master bedrooms, guest washrooms, covered parking area, and basement storage space, while penthouse apartments also feature Jacuzzi bathtubs. The walls in bedrooms are covered with branded wallpapers and tiles, designed by Roberto Cavalli Luxury Home and the wardrobes are Italian branded. All apartments have light automation and are covered with marble floor tiles in living room, corridors and bathroom (with Monograph Design) and solid wood parquet for bedrooms.

The cold and the hot weather will not be a problem for residents since the apartments are equipped with underfloor heating and VRV System / Air Conditioning. In addition, the kitchen will be equipped with electrical appliances by Miele and covered the tops with granite.

Residents of The Address by the Sea can enjoy a wealth of amenities synonymous with luxury living. Whether relaxing and unwinding at the communal swimming pool, sundeck and special landscape designed gardens or working up a sweat at the state-of-the-art gym, sauna and tennis courts, you can rest easy with the knowledge that secure, controlled access, by the audiovisual Intercom Entry System, adds an extra layer of safety and security to the premises.

All floors can be reached via two elevators from the impressive lobby area which has secure gated

08.04.2026

## **2 BEDROOM LUXURY AND SPACIOUS APARTMENT OF 175SQM IN MODERN BUILDING WITH SEA VIEW**

---

3 350 €/month

access.

The Address by the Sea has the distinctiveness of being close to schools, luxury shops and restaurants, banks, as well to various businesses, allowing its residents to have the exclusivity of a comfortable and luxury living with all the necessities.

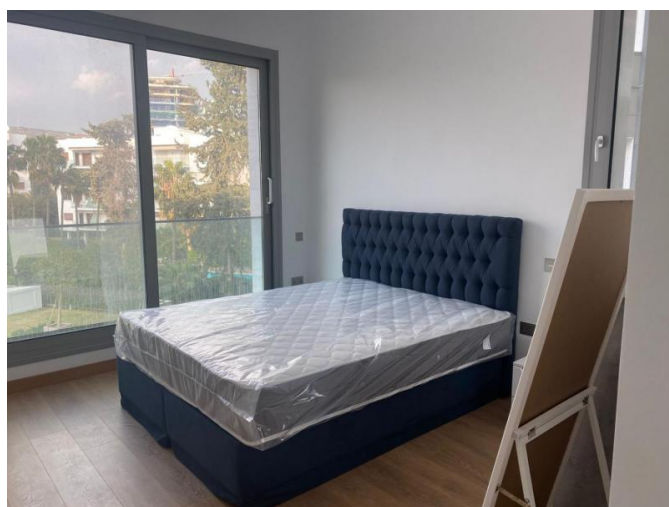
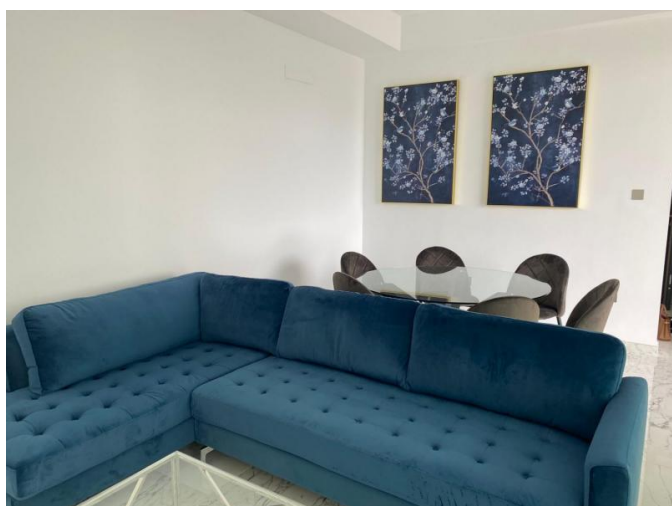
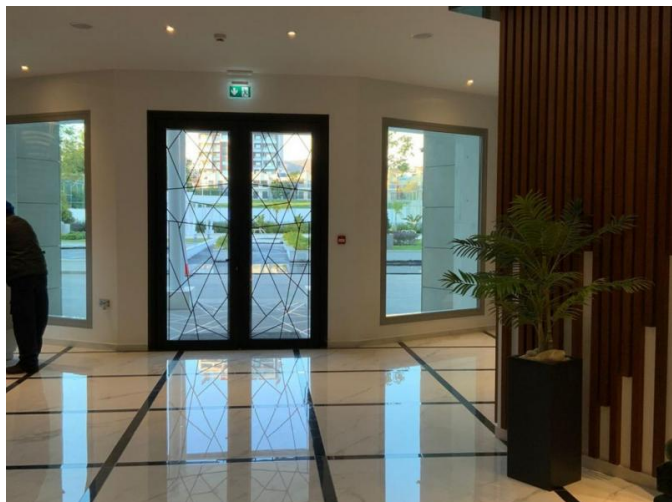
There's an apartment on 2nd floor - price 3350 eur/month



**2 BEDROOM LUXURY AND SPACIOUS  
APARTMENT OF 175SQM IN MODERN  
BUILDING WITH SEA VIEW**

---

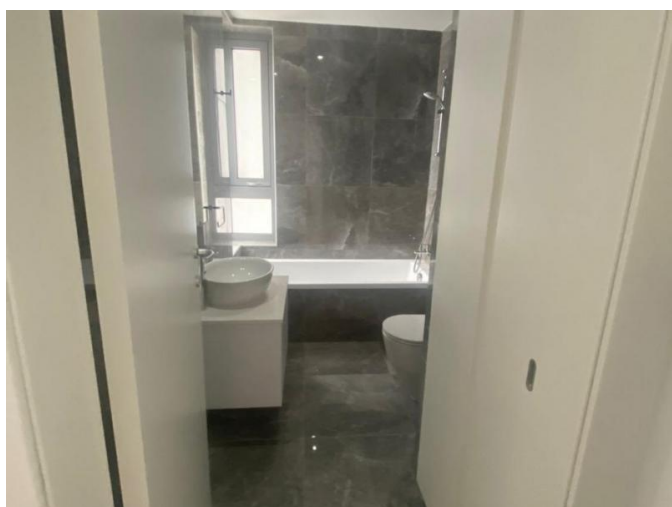
3 350 €/month



**2 BEDROOM LUXURY AND SPACIOUS  
APARTMENT OF 175SQM IN MODERN  
BUILDING WITH SEA VIEW**

---

3 350 €/month



**2 BEDROOM LUXURY AND SPACIOUS  
APARTMENT OF 175SQM IN MODERN  
BUILDING WITH SEA VIEW**

---

3 350 €/month

