

## SPACIOUS OFFICE WITH STUNNING SEA AND CITY VIEWS NEAR LIMASSOL MARINA

4 500 €/month

<b>Property Code:</b>	5800	<b>Type:</b>	Long-term rent - Office
<b>Location:</b>	Limassol - MOLOS	<b>Internal Area:</b>	220 m <sup>2</sup>
<b>Renovation:</b>	Modern		

### Property features:

Air Condition Telephone Line

### Description:

Located at the business heart of Limassol next to the Molos Park, close to the local amenities, hotels, cafes and restaurants, this office is an ideal place to call home for your business.

The office is available for long-term rent. It is set on the 7th & 8th floor and comes with hardwood floors, open concept lounge, staffed reception, private offices seating from 3 to 10 people, fully equipped kitchen, 2 bathrooms and views of the Mediterranean Sea, Molos park and Spyrou Araouzou Street.

Molos area is a unique recently developed area filled with different types of companies, amazing restaurants, hotels, cafes, and many more. It's an ideal area for any company to call home not only for business reasons, but also to get the perfect balance of work and enjoyment.

Available from the 9th of June 2022

## SPACIOUS OFFICE WITH STUNNING SEA AND CITY VIEWS NEAR LIMASSOL MARINA

---

4 500 €/month



---

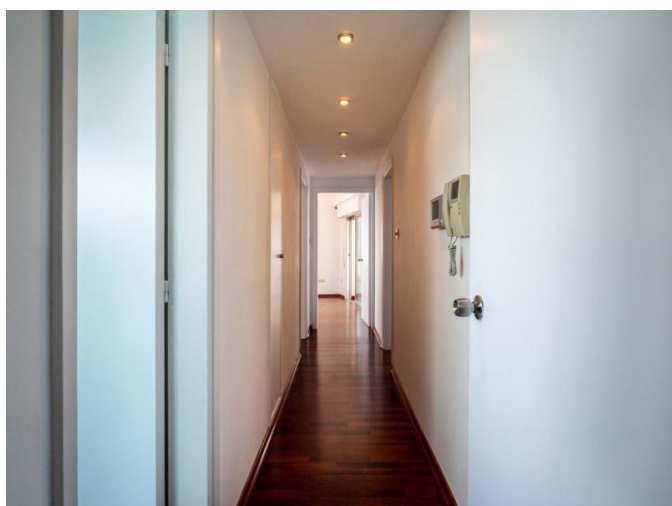
06.02.2026



## SPACIOUS OFFICE WITH STUNNING SEA AND CITY VIEWS NEAR LIMASSOL MARINA

---

4 500 €/month



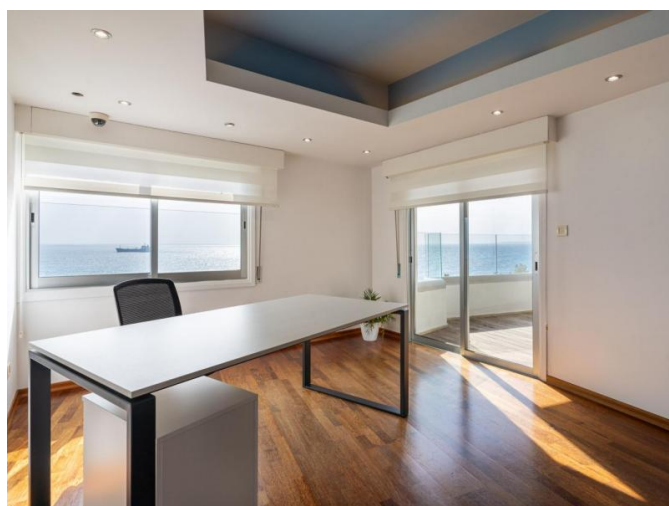
---

06.02.2026

## SPACIOUS OFFICE WITH STUNNING SEA AND CITY VIEWS NEAR LIMASSOL MARINA

---

4 500 €/month



---

06.02.2026