

OFFICE OF 200SQM WITH PANORAMIC VIEWS IN THE CITY CENTRE

3 000 €/month

Property Code:	5820	Type:	Long-term rent - Office
Location:	Limassol - KATHOLIKI	Internal Area:	200 m ²
Renovation:	Renovated	Floor:	7
Number of floors:	7		

Property features:

Air Condition	Double Glazing	Cooker	Extractor Fan
Parking			

Description:

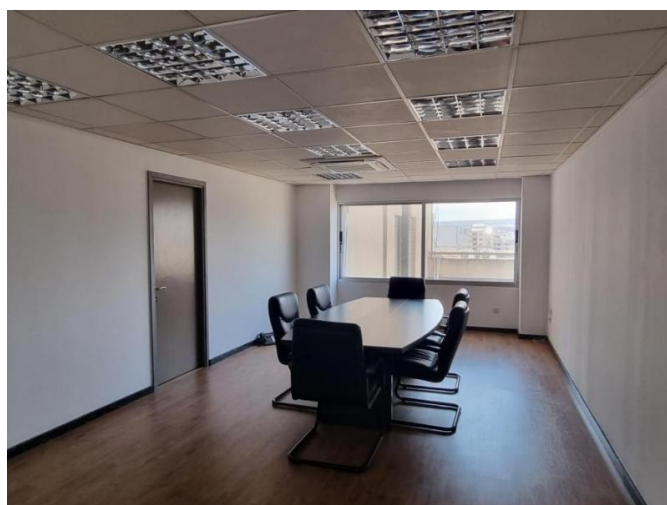
Office of 200 sqm in a heart of city centre, on busy road, with easy access to all amenities and high way and panoramic views. Situated on the 7th floor of well maintained commercial building.

It consists of open space working area, conference room, manager office, 2 wc, 1 spacious kitchen, double glazed windows, A/C.

Parking places (garage) in a basement and/or on a ground floor.

**OFFICE OF 200SQM WITH PANORAMIC
VIEWS IN THE CITY CENTRE**

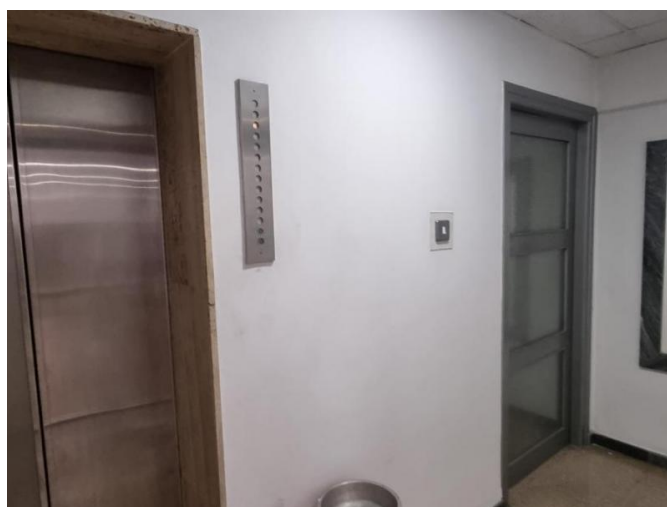
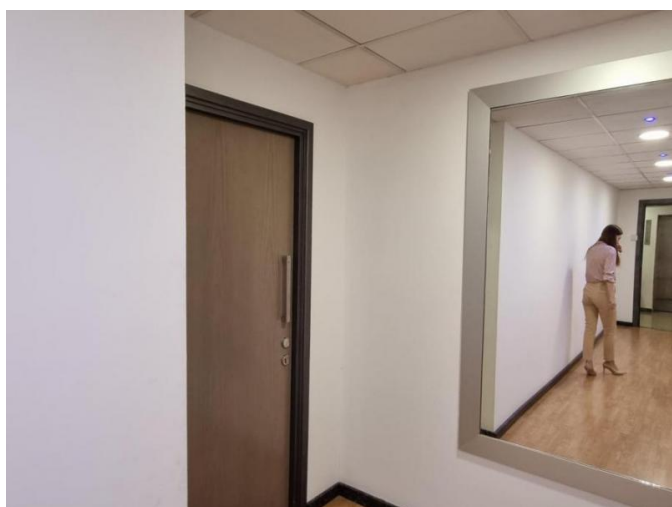
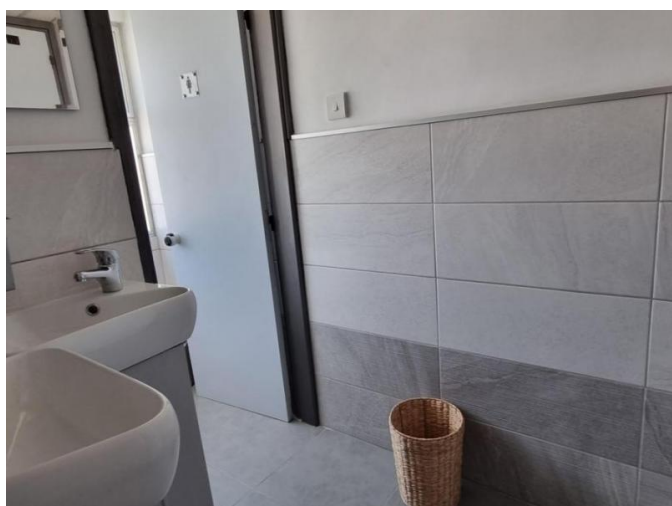
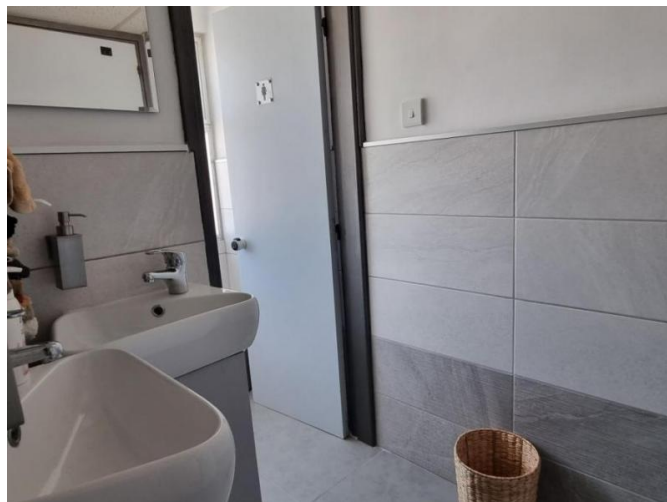
3 000 €/month



04.02.2026

OFFICE OF 200SQM WITH PANORAMIC VIEWS IN THE CITY CENTRE

3 000 €/month



**OFFICE OF 200SQM WITH PANORAMIC
VIEWS IN THE CITY CENTRE**

3 000 €/month



OFFICE OF 200SQM WITH PANORAMIC VIEWS IN THE CITY CENTRE

3 000 €/month

