

## MODERN INTERIOR 2 BEDROOM APARTMENTS WITH A GREAT VIEW

350 000 € —480 000 €

<b>Property Code:</b>	527	<b>Type:</b>	Sale - Apartment
<b>Location:</b>	Limassol - POTAMOS GERMASOGIA	<b>Internal Area:</b>	90 m <sup>2</sup>
<b>Bedrooms:</b>	2	<b>Bathrooms:</b>	2
<b>Renovation:</b>	Modern	<b>Number of floors:</b>	5
<b>Year of construction:</b>	2020	<b>Distance to the sea:</b>	750 m
<b>Distance to airport:</b>	65 km	<b>Status:</b>	Under Construction
<b>VAT:</b>	PLUS VAT	<b>Covered verandas, m<sup>2</sup>:</b>	10.00

### Property features:

Common Pool	Parking - Covered	Telephone Line	Solar panels for hot water
Double Glazing	Garden	Parking	Balcony

### Description:

This luxury project is situated in the great area of Potamos Germasogeias on the hill with sea and Limassol view. *9 minutes maximum walking distance to the sea , 10 minutes' drive east of the town Center and the same time being within easy access of the highway linking all major towns on the island.*

*Will be constructed in 3279m2 of land and will consist of 2 blocks with communal swimming pool each block.*

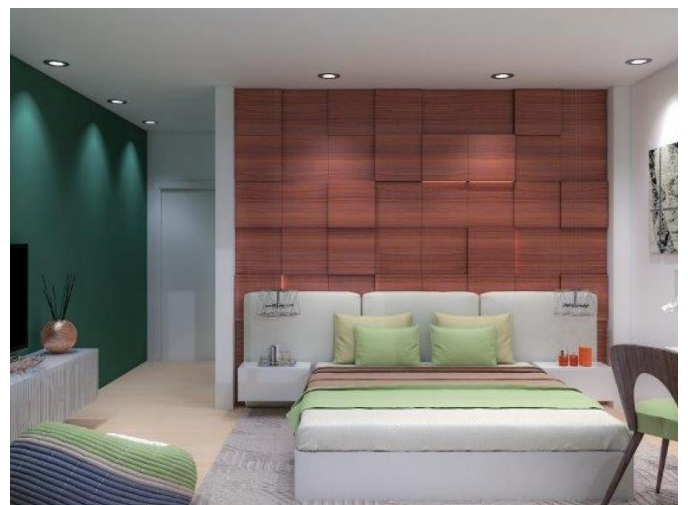
The building is being constructed with high quality materials and it will consist of 15 two and three bedroom apartments. Each apartment will have a covered veranda, store room and covered parking. The total covered area of two bedroom apartments will vary from 117 m2 to 135 m2.

Delivery date - June 2020.

**MODERN INTERIOR 2 BEDROOM  
APARTMENTS WITH A GREAT VIEW**

---

350 000 € —480 000 €



# MODERN INTERIOR 2 BEDROOM APARTMENTS WITH A GREAT VIEW

---

350 000 € —480 000 €

