

LUXURY INTERIOR 2 BEDROOM APARTMENTS

615 000 €

| | | | |
|------------------------------|----------------------------------|---|--------------------|
| Property Code: | 573 | Type: | Sale - Apartment |
| Location: | Limassol - POTAMOS GERMASOGIA | Internal Area: | 158 m ² |
| Bedrooms: | 2 | Renovation: | Design |
| Floor: | 2 | Number of floors: | 3 |
| Year of construction: | 2018 | Distance to the sea: | 1.2 km |
| Distance to airport: | 65 km | Status: | Off Plan |
| VAT: | PLUS VAT | Covered verandas, m²: | 25 |

Property features:

| | | | |
|-------------|----------------------------|-------------------|---------------------|
| Common Pool | Heating | Parking - Covered | Parking - Uncovered |
| Alarm | Solar panels for hot water | Double Glazing | Garage |
| Garden | Extractor Fan | Parking | Balcony |

Description:

- * Big communal Swimming pool & playground & gardens
- * Complex (big main entrance with electrical gate round about and private road)
- *Modern luxury interior / exterior
- *First quality materials
- *Delivery December 2018

Situated in the great area of Potamos Germasogeias 10 minutes maximum walking distance to the sea,

10 minutes' drive east of the town center and the same time being within easy access of the highway linking all major towns on the island.

Surrounding with gardens, private road with roundabout.

This luxury project will comprised of houses, apartments blocks luxury apartments.

Roof garden is also available.

It situated in the great area of Potamos Germasogeias 10 minutes maximum walking distance to the sea, 10 minutes' drive east of the town center and the same time being within easy access of the highway linking all major towns on the island. Will be constructed in surrounding with gardens private road with roundabout and a big communal pool.

Roof garden is also available.

Included:

All earthquake standards.

Structure with reinforced concrete high standard C30 and heat insulation bricks for perfect heat and sound insulation.

First quality sanitary ware and ceramics

Water mixers in bathroom brand CROHE.

Carpentry with accessories systems in kitchen and wardrobes

Sliding Wardrobes in bedrooms.

Kitchen's counter top from synthetic granite

All external doors and windows aluminum, charcoal grey color and double glassed glass.

Mosquito nets

Electric shutters in bedroom.

Plumbing installation with plastic pipes PIP TO PIP type.

Electrical under floor heating

Provision for satellite antenna

Entrance phone with color camera

Provision for Air conditioning

Security fire proof entrance door

Walking wardrobes and Ensuite in master bedroom in the houses and 3 bedroom whole -floor luxury apartments

Guest W.C.

Solar water system & water pressure system

Mature communal garden

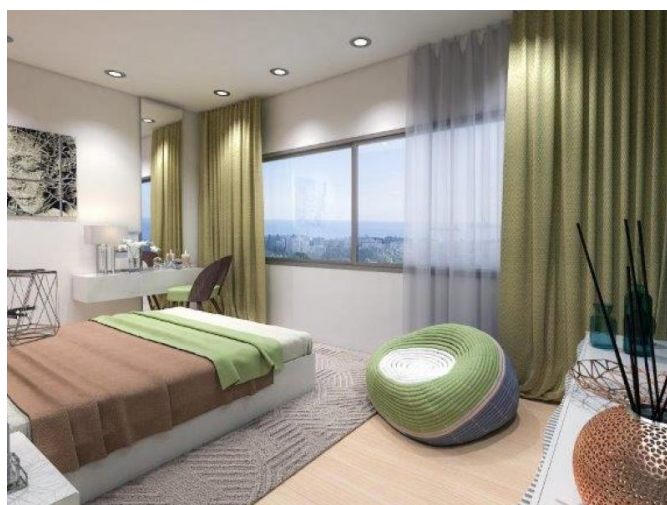
Communal Playground

Marble in communal indoor stairs

Marble stairs in houses

LUXURY INTERIOR 2 BEDROOM APARTMENTS

615 000 €



LUXURY INTERIOR 2 BEDROOM
APARTMENTS

615 000 €

