

SPACIOUS 3-BEDROOM APARTMENT CLOSE TO THE CITY CENTRE

€ 1 200 /month

Property Code:	5901	Type:	Long-term rent - Apartment
Location:	Limassol - NEAPOLIS	Internal Area:	110 m ²
Bedrooms:	3	Bathrooms:	2
Renovation:	Modern	Distance to the sea:	500 m
Distance to airport:	65 km		

Property features:

Air Conditioning	Covered Parking	Elevator	Furnished
Shutters	Air Condition	Parking - Covered	Telephone Line
Furnished	Solar panels for hot water	Double Glazing	Oven
Washing machine	Dish washer	Microwave	Cooker
Extractor Fan	Parking	Refrigerator	Balcony
Furniture			

Description:

This is a spacious apartment located close to the city centre and has access to the close-by infrastructure, such as major bus routes, shops, cafes, restaurants and etc. The apartment itself is well planned and consists of a spacious living room, dining room/kitchen, 2 bathrooms and 2 separate balconies.

The viewing is highly recommended to appreciate the property!

Rented until October 2023!

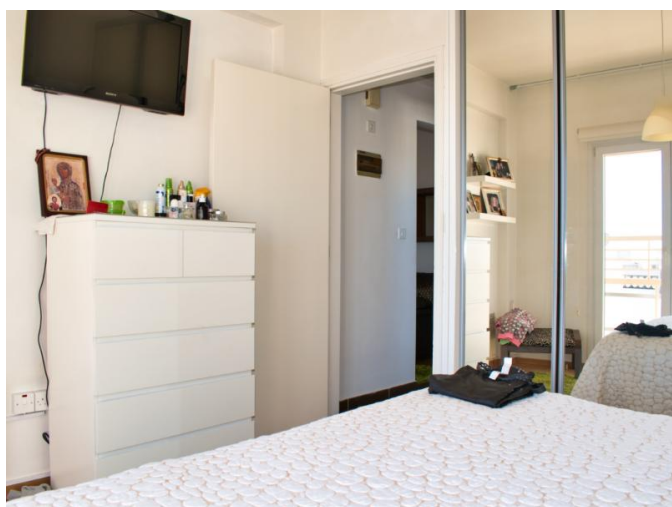
**SPACIOUS 3-BEDROOM APARTMENT
CLOSE TO THE CITY CENTRE**

€ 1 200 /month



SPACIOUS 3-BEDROOM APARTMENT CLOSE TO THE CITY CENTRE

€ 1 200 /month



**SPACIOUS 3-BEDROOM APARTMENT
CLOSE TO THE CITY CENTRE**

€ 1 200 /month

