

BRAND NEW 2-BEDROOM TOWNHOUSE NEAR THE SEA

€ 570 000

Property Code:	5941	Type:	Sale - House/Villa
Location:	Limassol - POTAMOS GERMASOGIA	Internal Area:	121 m ²
Plot Area:	149 m ²	Bedrooms:	2
Renovation:	Modern	Number of floors:	2
Heating:	Underfloor heating	Distance to the sea:	400 m
Distance to airport:	65 km	VAT:	+ VAT
Uncovered verandas, m²:	25		

Property features:

Air Conditioning	Communal Pool	Furnished	Shutters
Storage	Under Floor Heating	Air Condition	Telephone Line
Solar panels for hot water	Double Glazing	Cooker	Parking
Balcony	Furniture		

Description:

The townhouse located at the heart of Limassol's tourist area is a striking new project with impressive design details, just 400 metres from the sea. Created to offer an affluent island lifestyle to all residents through a carefully laid out complex which is close to all necessary amenities, it includes 3 apartment blocks and 4 semi-detached houses.

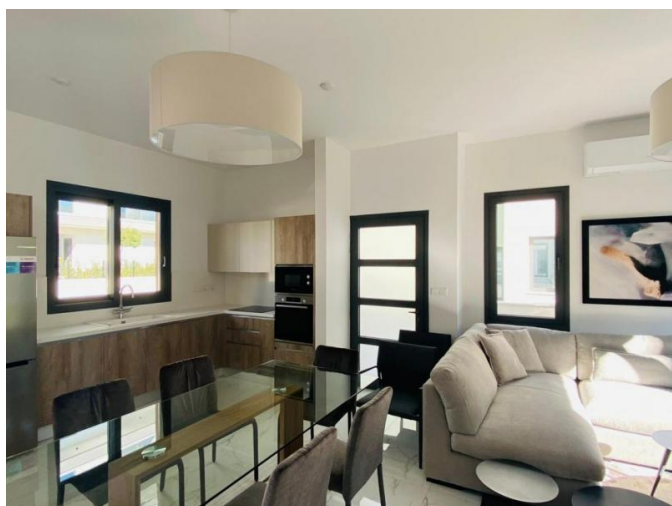
Features:

- Spacious 2 beds
- 2 WC
- Plot size 149 SQM
- Modern Italian furniture
- Bosch Electrical appliances
- A/C units
- Some sea view
- Parking for 2 cars
- Underfloor heating
- Store room
- Total area 121 SQM
- Solar system hot water
- Common swimming pool
- Small playground

**BRAND NEW 2-BEDROOM TOWNHOUSE
NEAR THE SEA**

€ 570 000

- Electric shutters in beds



BRAND NEW 2-BEDROOM TOWNHOUSE NEAR THE SEA

€ 570 000

