

OFFICE BUILDING ON ONE OF THE MAIN
COMMERCIAL ROADS IN LIMASSOL

4 500 000 €

Property Code:	5971	Type:	Sale - Office
Location:	Limassol - POLEMIDIA	Internal Area:	1530 m²

Property features:

Air Condition	Telephone Line	Solar panels for hot water	Double Glazing
Parking	Furniture		

Description:

The building is located in the area of Polemidia, one of the main commercial roads in Limassol, offering high visibility from all sides.

Furthermore this modern commercial building is located close to Limassol's central business district, surrounded by an array of commercial offices, financial institutions and a large selection of showrooms.

Offering a stylish and comfortable, yet functional working environment. The building is fully tenanted by reputable local and international companies, on long term rental contracts.

SPECIAL FEATURES INCLUDED:

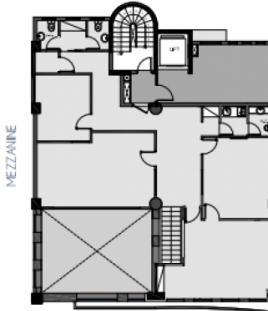
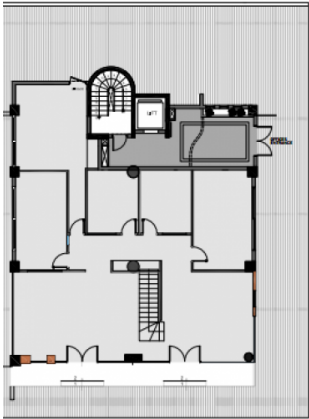
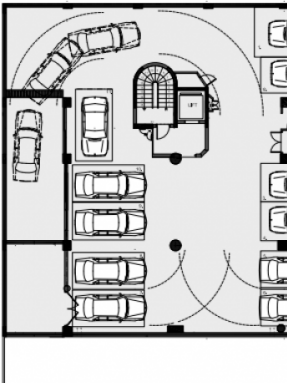
- custom designed internal office layout and partitioning as per customer requirements
- secured and gated underground parking areas
- tempered double glazing with acoustic
- fully fitted kitchen raised floors
- separate ladies & gents
- cctv security system for all common areas
- designated visitors parking spaces
- fiber optic cabling for internet connection
- additional staff parking areas
- marble flooring in lobby entrance
- fully air conditioned
- fire alarm system

OFFICE BUILDING ON ONE OF THE MAIN
COMMERCIAL ROADS IN LIMASSOL

4 500 000 €



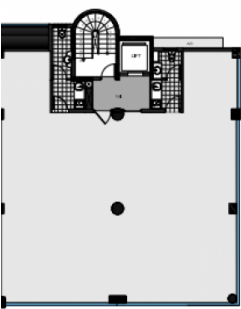
DOOR PLANS
SEMENT
100m² COVERED AREA



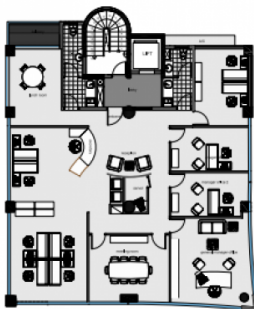
GROUND FLOOR & ME
RE
320m² COVER
525m² PL

OFFICE BUILDING ON ONE OF THE MAIN
COMMERCIAL ROADS IN LIMASSOL

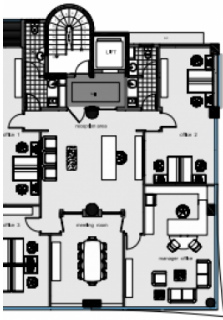
4 500 000 €



FIRST FLOOR
OFFICE 101
220m² COVERED AREA



SECOND
OFF
220m² COVERED



THIRD FLOOR
OFFICE 301
220m² COVERED AREA



FOURTH FL
OFFICE
150m² COVERED J