

MODERN 2- BEDROOM APARTMENT IN MESA GEITONIA ON THE TOP FLOOR

1 400 €/month

Property Code:	6053	Type:	Long-term rent - Apartment
Location:	Limassol - MESA GEITONIA	Internal Area:	90 m ²
Bedrooms:	2	Bathrooms:	1
Floor:	3	Number of floors:	3
Distance to airport:	65 km		

Property features:

3rd Floor Apartment	Covered Parking	Elevator	Furnished
Penthouse	Shutters	Air Condition	Telephone Line
Store Room	Solar panels for hot water	Double Glazing	Oven
Washing machine	Cooker	Extractor Fan	Refrigerator
Balcony			

Description:

Penthouse 2-bedroom apartment for rent Welcome to a stunning 2-bedroom apartment recently refurbished and located in Mesa Geitonia, Limassol that is available for long term rent! The apartment is situated on the 3rd floor of a 3 level building fully furnished and includes a large corner sofa, fridge, washing machine (recently replaced), cooking oven, ceramic hob (recently replaced), A/C in all rooms (x3), 1 double bed with 2 bedside tables, 1 single bed, TV and TV stand in the living room and a dining table with 4 chairs and Intercom with camera on main entrance. Additionally, the apartment contains Electric shutters, Roman blinds and Insect nets on all windows. The complex in which the apartment is located, contains a lift and is electrically gated in both entrances, providing security and peace of mind, one covered parking space and also, it has its own private storage room located in the parking area. The apartment is situated in a quiet neighborhood with plenty of amenities: - Mesa Gitonia round about, Municipality and central square - Supermarket and Bakery - Pharmacies - Supermarket and Kiosks - Gym - Church and Schools - Coffee shops - Kebab houses - Butchery shop - Hair dressing salons - Galactica patisserie - Super Home Center - Business and Medical centers - City parks for walking and exercising - Kids parks - Spyrou Kyprianou and Makarios avenue - Jumbo Linopetras area and Alpha Mega Kapsalos area The location of the apartment is perfect for those looking for easy access to the city center. It also has convenient access to the highway (2 mins drive).

**MODERN 2- BEDROOM APARTMENT IN
MESA GEITONIA ON THE TOP FLOOR**

1 400 €/month



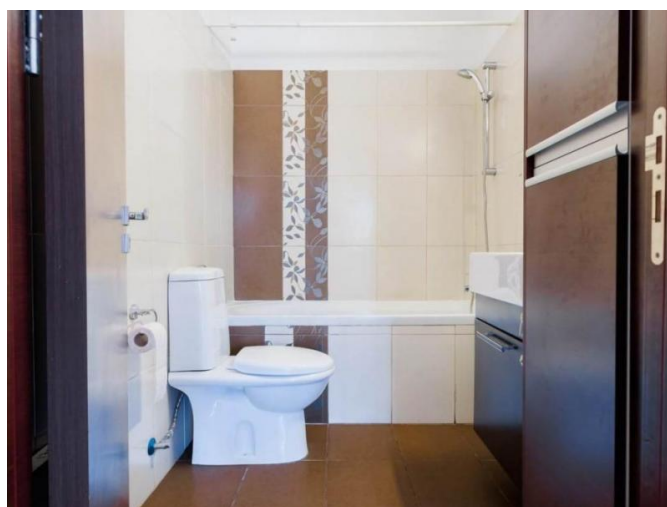
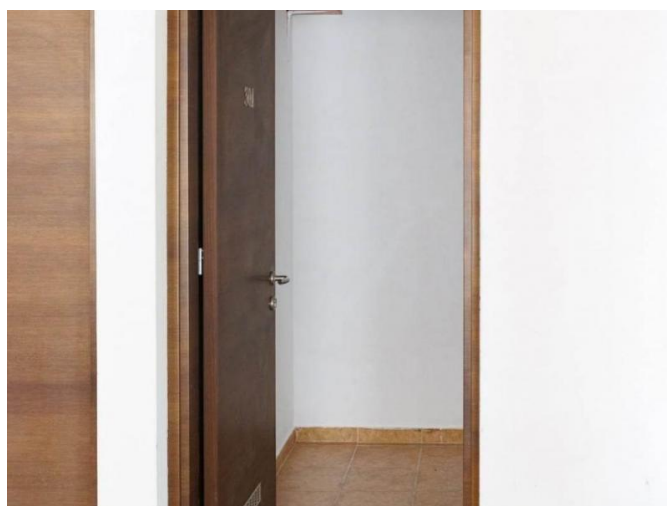
**MODERN 2- BEDROOM APARTMENT IN
MESA GEITONIA ON THE TOP FLOOR**

1 400 €/month



**MODERN 2- BEDROOM APARTMENT IN
MESA GEITONIA ON THE TOP FLOOR**

1 400 €/month



**MODERN 2- BEDROOM APARTMENT IN
MESA GEITONIA ON THE TOP FLOOR**

1 400 €/month

