

DOUPLEX 2 BEDROOM PENTHOUSE WITH PRIVATE SWIMMING POOL

3 500 €/month

Property Code:	6108	Type:	Long-term rent - Apartment
Location:	Limassol - COLUMBIA	Internal Area:	91 m ²
Bedrooms:	2	Bathrooms:	3
Renovation:	Modern	Floor:	3
Number of floors:	3	Heating:	Underfloor heating
Energy class:	A+	Year of construction:	2022
Distance to the sea:	2 km	Distance to airport:	60 km
Uncovered verandas, m²:	57	Covered verandas, m²:	68

Property features:

Elevator	Sea View	Top Floor Apartment	Under Floor Heating
Air Condition	Parking - Covered	VRV central ceiling system	Private Pool
Solar panels for hot water	Double Glazing	Oven	Washing machine
Dish washer	Microwave	Cooker	Extractor Fan
Parking	Refrigerator	Balcony	Furniture

Description:

Brand new building with easy and smooth access to the high way and sea side.

Flat area: 91m²

Covered verandas: 68m²

Total: 159m²

Roof terrace: 57m²

Private swimming pool

2 bedrooms en-suite

1 bathroom on a roof terrace

1 toilet:

A/C VRV system

Floor heating is fully operational

DOUPLEX 2 BEDROOM PENTHOUSE WITH PRIVATE SWIMMING POOL

3 500 €/month

All furniture and equiped

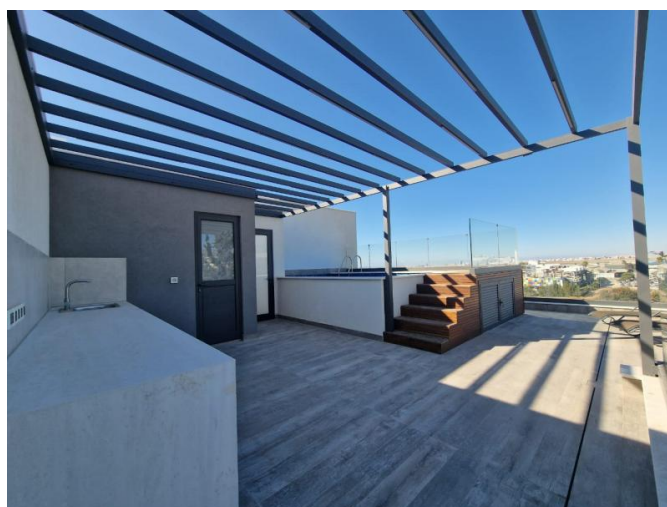
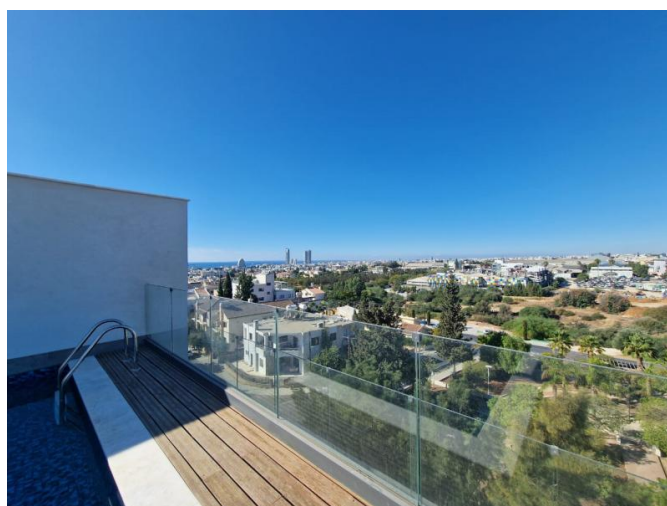
Rental price 3500 eur/month + common expenses (100eur)+ swimming pool maintenance (100 eur).Price can be negotiable based on payment methods.



10.04.2026

DOUPLEX 2 BEDROOM PENTHOUSE WITH PRIVATE SWIMMING POOL

3 500 €/month



DOUPLEX 2 BEDROOM PENTHOUSE WITH PRIVATE SWIMMING POOL

3 500 €/month

