

4 BEDROOM DUPLEX UPPER HOUSE IN A PRIME LOCATION WITHIN EASY ACCESS TO THE HIGH WAY AND...

1 300 €/month

Property Code:	6174	Type:	Long-term rent - Townhouse
Location:	Limassol - MESA GEITONIA	Internal Area:	130 m ²
Bedrooms:	4	Bathrooms:	3
Distance to the sea:	2.4 km	Distance to airport:	55 km
Uncovered verandas, m²:	25	Covered verandas, m²:	20

Property features:

Unfurnished	Heating	Air Condition	Solar panels for hot water
Double Glazing	Maids Room	Oven	Cooker
Balcony			

Description:

Very spacious 4 bedroom duplex upper house located in residential area with easy access to the high way, city centre, sea side and etc. It's very convenient for those who want to leave in a quiet, solid

and tranquil neighbourhood but same time to be within few minutes anywhere in the busy city of Limassol or to take an exit to high way leading to other cities of Cyprus.

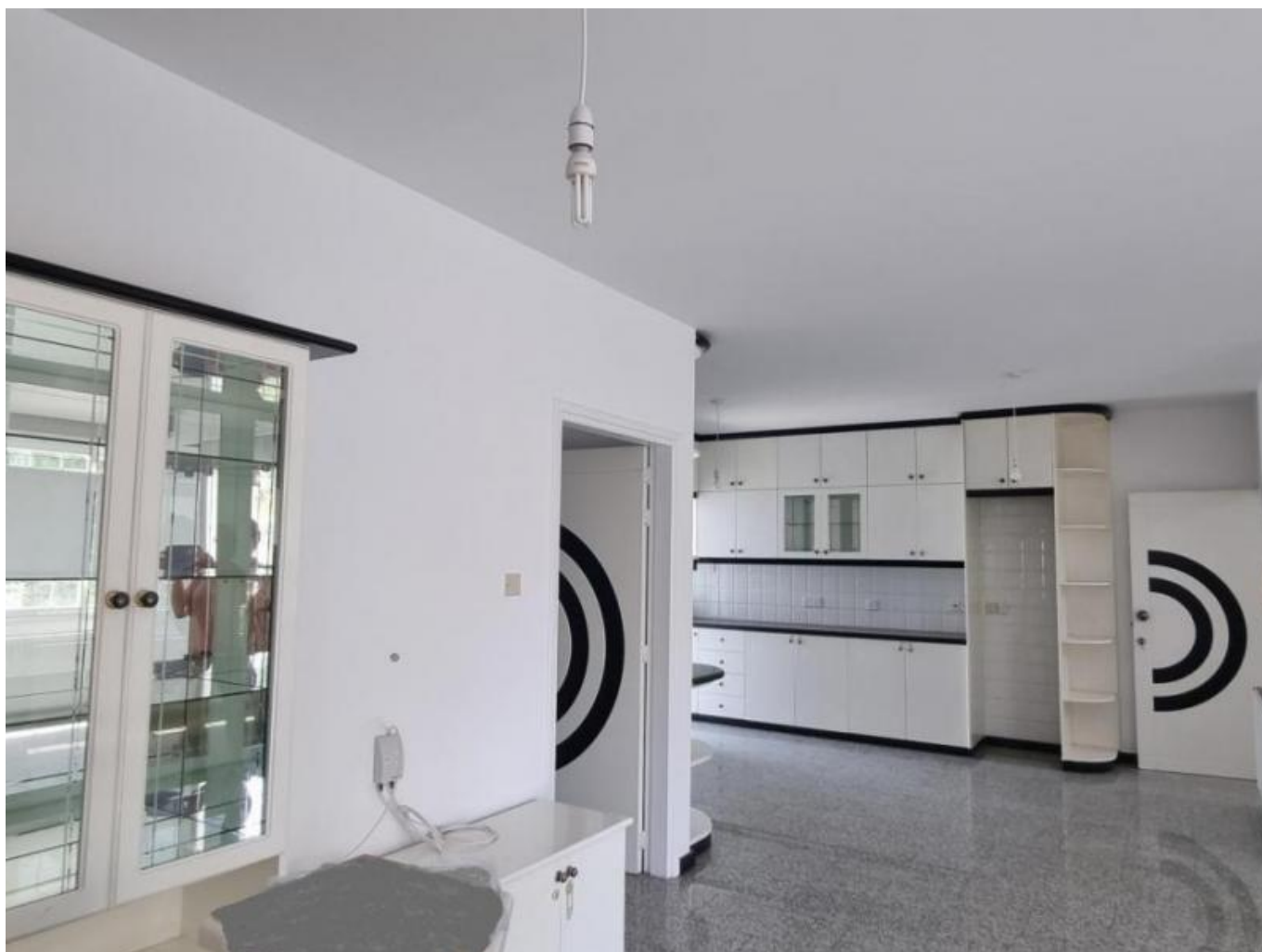
The property has private entrance and consists of very large double sitting/living area leading to good size veranda with semi- open kitchen, 3 double bedrooms, main bathroom with a tube and guest wc. There's another bedroom with and exit to large terrace and small kitchenette with independent shower on the upper floor of the property.

Property is freshly painted, has double glassed windows, shutters, new A/C throughout, Central Heating (diesel), parking on the side of the building.

Rental price for partly - unfurnished (2 hobs - cookers and 1 oven included) is 1300 eur / month for min 2 years Contract. Deposit - 1 month rent. No pets allowed.

**4 BEDROOM DUPLEX UPPER HOUSE IN A
PRIME LOCATION WITHIN EASY ACCESS
TO THE HIGH WAY AND...**

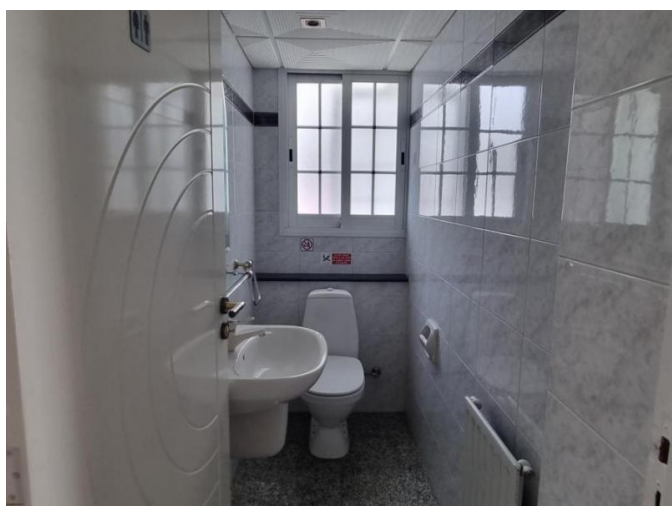
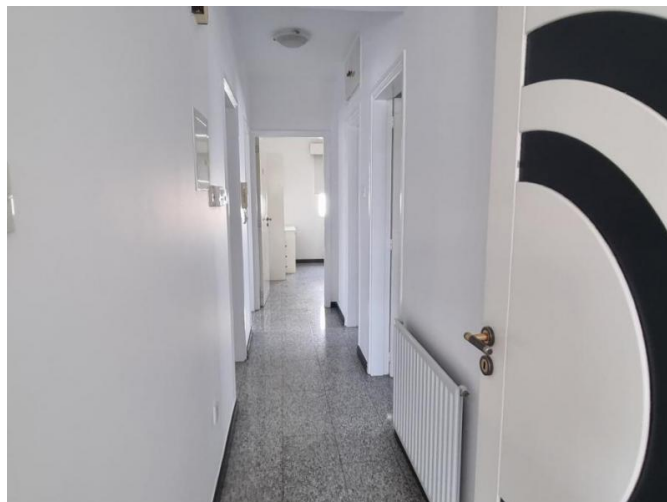
1 300 €/month



15.01.2026

**4 BEDROOM DUPLEX UPPER HOUSE IN A
PRIME LOCATION WITHIN EASY ACCESS
TO THE HIGH WAY AND...**

1 300 €/month



15.01.2026

**4 BEDROOM DUPLEX UPPER HOUSE IN A
PRIME LOCATION WITHIN EASY ACCESS
TO THE HIGH WAY AND...**

1 300 €/month



15.01.2026

**4 BEDROOM DUPLEX UPPER HOUSE IN A
PRIME LOCATION WITHIN EASY ACCESS
TO THE HIGH WAY AND...**

1 300 €/month



15.01.2026