

BRAND NEW 1 BEDROOM APARTMENT WITH PANORAMIC VIEWS AND SMOOTH ACCESS TO THE HIGH WAY

€ 1 750 /month

Property Code:	6196	Type:	Long-term rent - Apartment
Location:	Limassol - AGIOS ATHANASIOS	Internal Area:	56 m ²
Bedrooms:	1	Bathrooms:	1
Renovation:	Modern	Number of floors:	3
Energy class:	A+	Year of construction:	2023
Distance to the sea:	3 km	Distance to airport:	60 km
Status:	New	Covered verandas, m²:	17

Property features:

Elevator	Air Condition	Furnished	VRV central ceiling system
Store Room	Solar panels for hot water	Double Glazing	Oven
Washing machine	Dish washer	Cooker	Parking
Refrigerator	Balcony	Furniture	

Description:

Brand new (delivered October, 2023), modern, energy efficiency A+, just 6 apartments block in Ag. Athanasios, slightly above a high way, with amazing panoramic sea and mountain views, smooth access to all facilities,- 3min drive to Linopetra roundabout, Foley's school. Very quiet area.

The Property FEATURES:

High-quality porcelain tiles

High-quality laminated parquet floors in the bedrooms

Modern Italian high-standard kitchen cabinets and wardrobes, all brand new furniture

Kitchens, toilets, and corridors ceilings will be decorated with gypsum boards with built-in spotlights. Bedroom lights or chandeliers are not included.

Aluminum windows with thermal insulation performance, double glazed glass to provide extra thermal insulation.

Air Conditions installed

A solar panel to provide hot water & reservoir tank for each flat. Also, there will be provision for a water softener.

A pressurized system will be installed to provide extra pressure of water in each flat.

23.06.2026

**BRAND NEW 1 BEDROOM APARTMENT
WITH PANORAMIC VIEWS AND SMOOTH
ACCESS TO THE HIGH WAY**

€ 1 750 /month

Covered parking

Gated entrance

Storeroom

Available:

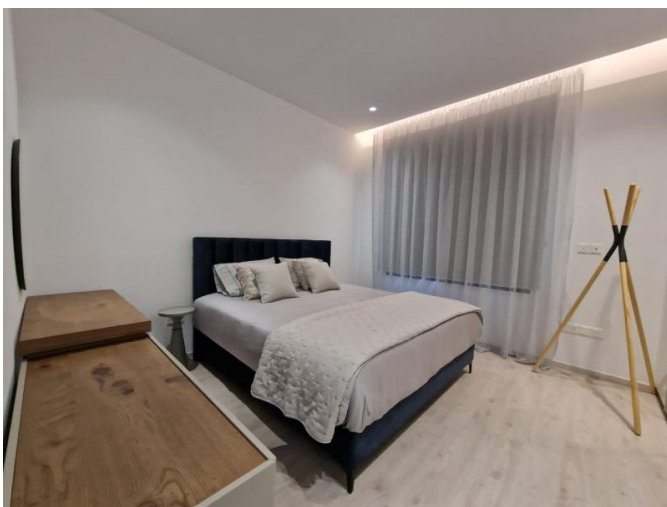
ONE BEDROOM FLAT - covered area - 56 ; cov. veranda - 17 ; storage - 3.1

PRICE: 1 750 eur/month + common expenses



**BRAND NEW 1 BEDROOM APARTMENT
WITH PANORAMIC VIEWS AND SMOOTH
ACCESS TO THE HIGH WAY**

€ 1 750 /month



BRAND NEW 1 BEDROOM APARTMENT WITH PANORAMIC VIEWS AND SMOOTH ACCESS TO THE HIGH WAY

€ 1 750 /month

