

EXECUTIVE AND CHARMING 6 BEDROOM HOUSE IN PRIME LOCATION WITHIN WALKING DISTANCE TO THE...

3 500 €/month
~~4 000 €/month~~

Property Code:	6238	Type:	Long-term rent - House/Villa
Location:	Limassol - LINOPETRA	Internal Area:	250 m ²
Plot Area:	300 m ²	Bedrooms:	6+
Bathrooms:	4+	Renovation:	Renovated
Heating:	Central heating	Distance to the sea:	800 m
Distance to airport:	55 km		

Property features:

Barbeque	Heating	Air Condition	Parking - Covered
Parking - Uncovered	Furnished	Store Room	Fireplace
Solar panels for hot water	Double Glazing	Garden	Oven
Washing machine	Dish washer	Microwave	Cooker
Parking	Refrigerator	Balcony	Furniture

Description:

This executive and very charming 6 BR semi-detached house of 250sqm in the best location of Limassol Linopetra -tourist area, walking distance to the sea, to one of the best beaches of: Columbia/Crown Plaza Hotel, Dassoudi Beach. Very spacious house which can be used as 2 independent units. Ideal combination for live and work in , - office can be arranged via separate entrance. AC - throughout, Central heating (Diesel), 2 fire places (real wood burn). Nice small garden with pergola, BBQ area. Covered parking for 2-3 cars. 4 bathrooms, 2 kitchens, 2 living rooms, sauna. Fully luxury furnished.

Walking distance to the sea and all amenities, offices, banks, supermarkets - Lidl, Sklavenites, Alpha Mega and etc.

Property must be seen to be appreciated by its quality.

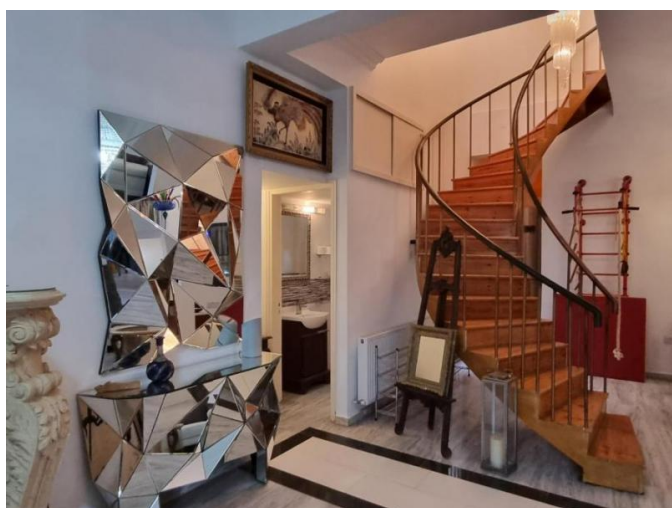
**EXECUTIVE AND CHARMING 6 BEDROOM
HOUSE IN PRIME LOCATION WITHIN
WALKING DISTANCE TO THE...**

3 500 €/month
~~4 000 €/month~~



**EXECUTIVE AND CHARMING 6 BEDROOM
HOUSE IN PRIME LOCATION WITHIN
WALKING DISTANCE TO THE...**

3 500 €/month
~~4 000 €/month~~



**EXECUTIVE AND CHARMING 6 BEDROOM
HOUSE IN PRIME LOCATION WITHIN
WALKING DISTANCE TO THE...**

3 500 €/month
~~4 000 €/month~~



**EXECUTIVE AND CHARMING 6 BEDROOM
HOUSE IN PRIME LOCATION WITHIN
WALKING DISTANCE TO THE...**

3 500 €/month
~~4 000 €/month~~

