

**NEARLY BRAND NEW 2 BEDROOM
APARTMENT IN SMALL BUILDING WITHIN
WALKING DISTANCE TO THE SEA**

2 000 €/month
~~2 300 €/month~~

Property Code:	6242	Type:	Long-term rent - Apartment
Location:	Limassol - POTAMOS GERMASOGIA	Internal Area:	90 m ²
Bedrooms:	2	Bathrooms:	1
Renovation:	Renovated	Floor:	2
Number of floors:	4	Energy class:	A
Distance to the sea:	400 m	Distance to airport:	55 km
Covered verandas, m²:	15		

Property features:

Furnished	Store Room	Solar panels for hot water	Double Glazing
Oven	Washing machine	Dish washer	Microwave
Cooker	Parking	Refrigerator	Balcony
Furniture			

Description:

Nearly brand new 2 bedroom apartment in a small gated building on the quiet coul-de -sac road in tourist area within walking distance to the sea.

* Highest quality: kitchen appliances, air condition units (Mitsubischi), lighting (LED) throughout and solar panels for hot water hence great energy efficiency, wood parquet floor in the bedrooms, thermo isolated windows with mosquito nets , stylish furniture, smart TV and etc.

* Covered Parking

* Storage room

* Close to the sea and all amenities inclusive of supermarkets, pharmacies, restaurants, cafeterias and bars.

Rental price includes common expenses.

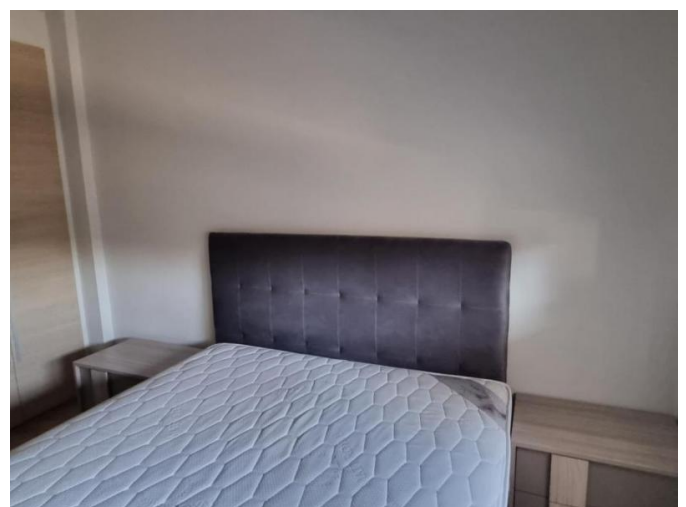
**NEARLY BRAND NEW 2 BEDROOM
APARTMENT IN SMALL BUILDING WITHIN
WALKING DISTANCE TO THE SEA**

2 000 €/month
~~2-300 €/month~~



**NEARLY BRAND NEW 2 BEDROOM
APARTMENT IN SMALL BUILDING WITHIN
WALKING DISTANCE TO THE SEA**

2 000 €/month
~~2-300 €/month~~



**NEARLY BRAND NEW 2 BEDROOM
APARTMENT IN SMALL BUILDING WITHIN
WALKING DISTANCE TO THE SEA**

2 000 €/month
~~2-300 €/month~~

