

FURNISHED 2-BEDROOM SEMI-DETACHED HOUSE WITHIN WALKING DISTANCE TO DASSOUDI BEACH

1 500 €/month

Property Code:	6281	Type:	Long-term rent - Townhouse
Location:	Limassol - POTAMOS GERMASOGIA	Internal Area:	75 m ²
Plot Area:	150 m ²	Bedrooms:	2
Bathrooms:	1	Renovation:	Renovated
Number of floors:	2		

Property features:

Air Conditioning	Covered Parking	Furnished	Storage
Telephone Line	Double Glazing	Garden	Washing machine
Cooker	Refrigerator	Balcony	Furniture

Description:

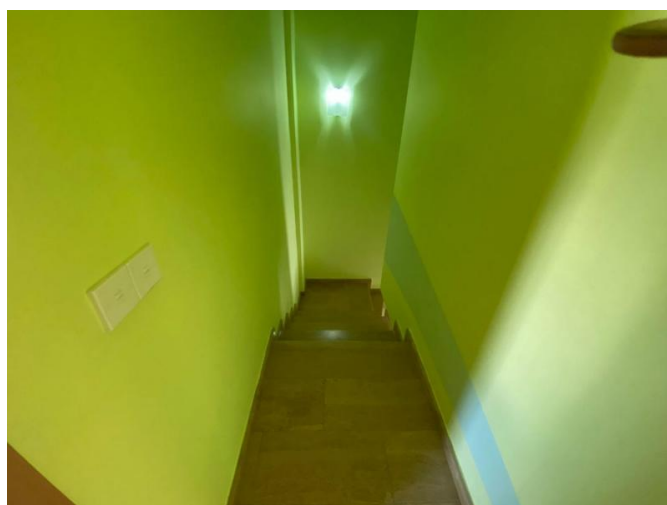
Within a quiet location providing an ideal opportunity for a family or single person is this spacious 2-bedroom semi-detached house. Being offered with a garden and covered parking place makes it sure to appeal.

The property comprises; a spacious lounge and well-equipped kitchen, guest WC. On the first floor, there are two bedrooms with balconies and a family bathroom.

Within walking distance of local shops and amenities as well as shops and bus routes and school.

**FURNISHED 2-BEDROOM SEMI-DETACHED
HOUSE WITHIN WALKING DISTANCE TO
DASSOUDI BEACH**

1 500 €/month



19.02.2026

**FURNISHED 2-BEDROOM SEMI-DETACHED
HOUSE WITHIN WALKING DISTANCE TO
DASSOUDI BEACH**

1 500 €/month



19.02.2026

**FURNISHED 2-BEDROOM SEMI-DETACHED
HOUSE WITHIN WALKING DISTANCE TO
DASSOUDI BEACH**

1 500 €/month



19.02.2026