

CHARMING 4-BEDROOM MAISONETTE IN  
PANO POLEMIDIA - SPACIOUS,  
FURNISHED, AND IDEALLY LOCATED

2 000 €/month

Property Code:	6283	Type:	Long-term rent - Townhouse
Location:	Limassol - POLEMIDIA	Internal Area:	180 m²
Plot Area:	400 m²	Bedrooms:	4
Bathrooms:	2	Renovation:	Modern
Number of floors:	2	Distance to the sea:	6.15 km
Distance to airport:	65 km	Uncovered verandas, m²:	80

Property features:

Air Conditioning	Furnished	Shutters	Storage
Air Condition	Parking - Uncovered	Telephone Line	Furnished
Store Room	Solar panels for hot water	Double Glazing	Garden
Maids Room	Oven	Washing machine	Dish washer
Microwave	Cooker	Extractor Fan	Parking
Refrigerator	Balcony	Furniture	

Description:

Located in the serene neighbourhood of Pano Polemidia in Limassol, this exquisite 4-bedroom maisonette offers a blend of comfort and convenience, perfect for families and professionals alike. Spanning an impressive 180 square meters of interior space, complemented by an 80 square meter uncovered verandah, this property sits on a generous 400 square meter plot, ensuring ample outdoor space for relaxation and entertainment.

This two-story maisonette boasts a thoughtful layout designed for modern living. The ground floor features an open-plan living and dining room that flows seamlessly into a well-appointed kitchen, accompanied by an additional cosy living room. This level also includes a practical guest toilet. The outdoor area is a highlight, with uncovered parking for two cars, a verdant garden, a spacious verandah, a BBQ area, and a versatile storage or maid's room.

The first floor houses the private quarters, comprising four well-sized bedrooms and a bathroom equipped with a shower. Each room is designed to offer comfort and tranquillity, ensuring a peaceful retreat after a busy day.

The property comes fully furnished, with tasteful decor that complements the overall ambience. Double-glazed windows ensure a tranquil environment inside, free from the hustle and bustle of the outside world. Security is paramount, with IP outside cameras installed for your peace of mind.

Conveniently located, the maisonette is just 1 km away from essential amenities like a supermarket and pharmacy, and 2 km from a bakery. Fitness enthusiasts will appreciate the 7-minute drive to a local gym. For medical needs, the Limassol Central Hospital is a mere 900 meters away. Families

## CHARMING 4-BEDROOM MAISONETTE IN PANO POLEMIDIA - SPACIOUS, FURNISHED, AND IDEALLY LOCATED

---

2 000 €/month

will benefit from the proximity to top-rated schools, with the Heritage Private School and the Island Private School both within a 12-minute drive.

This property is not just a house; it's a home waiting for the right tenant to appreciate its unique blend of style, comfort, and location. **Contact us today to schedule a viewing and take the first step towards making this your new home!**





**CHARMING 4-BEDROOM MAISONETTE IN  
PANO POLEMIDIA - SPACIOUS,  
FURNISHED, AND IDEALLY LOCATED**

---

2 000 €/month

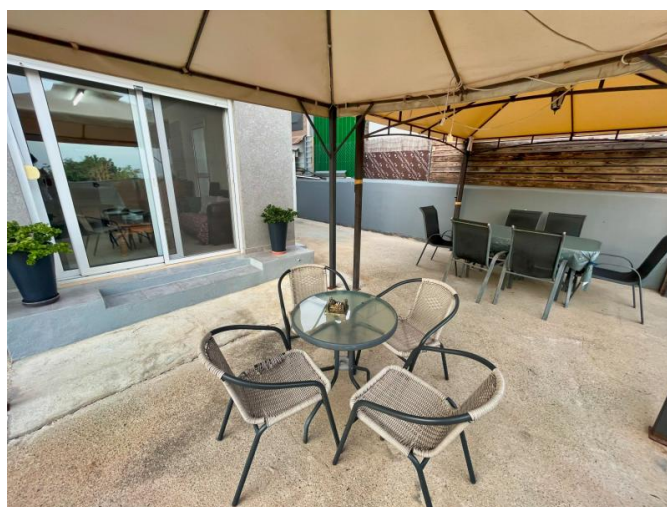
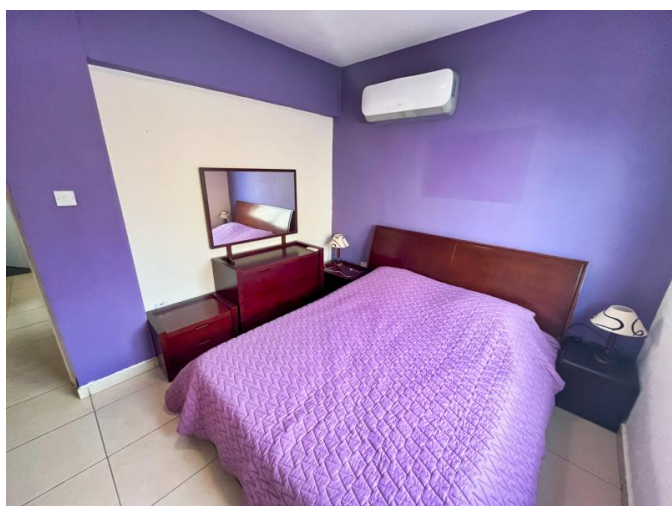




**CHARMING 4-BEDROOM MAISONETTE IN  
PANO POLEMIDIA - SPACIOUS,  
FURNISHED, AND IDEALLY LOCATED**

---

2 000 €/month



---

20.02.2026